

IFH INSIGHTS

Quarterly News from Rutgers Institute for
Health, Health Care Policy and Aging Research

JULY
-
SEPTEMBER
2023



Students Contribute to Research Through Internship

11 undergraduate and graduate students from across the country were selected to participate in IFH's Summer Research Internship Program. The 10-week program paired students with faculty mentors to pursue a research project and receive valuable career advice.

Continued on page 4.

IFH Hosts Fall Luncheon

In September, faculty and staff gathered on a beautiful end of summer day to celebrate the start of a new academic year and welcome new faculty and staff to the Institute.



IN THIS ISSUE

NEW FACULTY & STAFF

NEW GRANTS

SUMMER INTERNSHIP

**FACULTY PROMOTIONS
AND AWARDS**

CENTER RETREAT

UPCOMING EVENTS

RESOURCE CORNER

& MORE

NEWS

Faculty Promoted

Congratulations to Dan Horton, core member of PETS, and Michelle Chen, core member of CHA, for receiving promotions.

Daniel B. Horton, MD, MSCE, FISPE

Associate Professor of Pediatrics with Tenure, RWJMS; Faculty Director, IFH Survey/Data Core & Associate Professor of Epidemiology, Rutgers School of Public Health



What does it mean to you to receive promotion to associate professor with tenure at Rutgers?

I am honored by the recognition of the work I have been doing at Rutgers since arriving 7 years ago. This promotion is also a testament to the incredible mentorship I have benefited from and the fabulous teams I have had the privilege of working with - in research projects, in the clinic and hospital, and in the classroom.

What areas are you currently focused on in your research and your work with IFH?

My current research efforts focus on the origins of childhood diseases, the uses and safety of medicines in children, the management of childhood arthritis, and the clinical and immunologic consequences of COVID-19.

Michelle Chen, PhD

Assistant Professor,
Department of Neurology, RWJMS



What does it mean to you to receive promotion to assistant professor at Rutgers?

It means that my work is being recognized by the university and I am provided with the resources to continue to build up my research programs.

Faculty and Staff Awarded

Faculty and staff from IFH centers and affiliated institutes received 2023 RBHS Chancellor Awards - established in 2020 to recognize and highlight the extraordinary work of faculty and staff.

Excellence in Clinical or Health Sciences

Research Award

Chintan Dave, PharmD, PhD, Core Faculty at PETS and Assistant Professor, Department of Pharmacy Practice and Administration, Ernest Mario School of Pharmacy



Sustained Service Award

Matthew Iozzio, MBA, MPP, Associate Director of Finance and Administration, PETS



Margaret Koller, MS, Executive Director, CSHP



Excellence in Diversity, Equity and Inclusion Award

Arpita Jindani, Senior Program Manager, Health Equity, Education and Training, RGHI



What areas are you currently focused on in your research and your work with IFH?

My current research focuses on the applications of digital technologies to the assessment of real-world neurological symptoms, including cognition and fatigue, as well as modifiable risk factors of cognitive decline. My long-term goal is to develop and validate scalable, digital lifestyle interventions that can be delivered remotely in order to improve cognitive functioning.

NEW FACES



Elizabeth Stone
Instructor, CHSR &
Dept. of Psychiatry,
RWJMS



Dan Treglia
Instructor, CSHP &
Dept. of Family Medicine &
Community Health, RWJMS



Auriel Willette
Associate Professor,
CHA & Dept. of
Neurology, RWJMS



Christopher Rowan
Adjunct Faculty,
PETS



Jenny Sun
Adjunct Faculty,
PETS



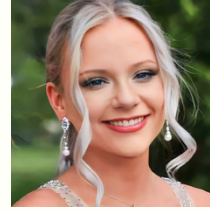
Francine Cartwright
Research Project
Manager,
NJHealth Study



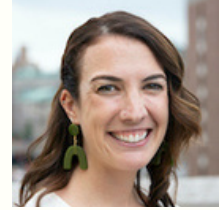
Christine Jurcsek
Program Assistant,
PETS



Alicia Lizuka
Research Assistant,
PETS



Madeline Schnitzler
Research Assistant,
CPBH



**Amanda Spishak-
Thomas**
Medicaid Research
Scholar, CSHP

NEW GRANTS



Stephen Crystal (CHSR)

Implementation Support for the Integrated
Population Health Data (iPHD) Project

**Subcontract from Joel Cantor/CSHP;
Sponsor: NJ Department of Health**

The OUD Cascade of Care and Critical Outcomes:
Longitudinal Linkage with Opioid Use

**Subcontract from
Research Foundation for Mental Hygiene, Inc.;**
Sponsor: National Institute on Drug Abuse



Tammy Chung (CPBH)

Monitoring acute and longer-term effects of
cannabis on psychomotor performance in
daily life in medical cannabis patients

Sponsor: National Institute on Drug Abuse



William Hu (CHA)

Resource Center for Alzheimer's and Dementia
Research in Asian and Pacific Americans

Sponsor: National Institute on Aging



Margaret Koller (CSHP)

Evaluation of the Children's System of
Care's Intensive Mobile Treatment Pilot
Program for Youth with Intellectual and
Developmental Disabilities

Sponsor: NJ Department of Children and Families

Including the Integrated Population Health Data (iPHD)
into the Health Data for Action (HD4A) Program

Sponsor: Robert Wood Johnson Foundation



Ann Nguyen (CSHP)

Analysis of the size, composition, geographic
distribution and engagement of New Jersey's
perinatal workforce

Sponsor: NJ Department of Human Services



Michelle Chen (CHA)

It's not where you are but how you get there:
predicting neuropsychological process scores
using digital voice recordings

**Sponsor: Rutgers University
(Busch Biomedical Grant Program)**

CPLB Hosts Retreat

In June, CPLB held its first annual retreat devoted to the ethics of deferring, detecting, and responding to engineered-virus pandemics. Philosophers, biologists, epidemiologists, doctors, and policy and pandemic response experts gathered in upstate New York to discuss the scientific, philosophical and policy aspects of this emerging challenge.

Keynote talks were presented by Kevin Esvelt of MIT, Marc Lipsitch of Harvard, and Carla Saenz of PAHO. The Hastings Center hosted some sessions, and the retreat was funded by Longview Philanthropy.

[Read full article on CPLB's website.](#)



Upcoming Events

- Thursday, October 5 12pm - **Brown Bag Seminar with Joar Fystro** on patient nonattendance fees in healthcare
- Thursday, October 26 12pm - **Brown Bag Seminar with Dr. Yukiko Asada** of the National Institutes of Health on disparities research
- Thursday, November 16 12pm - **Brown Bag Seminar with Dr. Margaret Marsh** on the 1918 and 2020 pandemics

Resource Corner

Applications are open for the 2nd round of funding from the **Rutgers Equity Alliance for Community Health (REACH)**. This opportunity is for internal funding awarded to Rutgers full-time faculty and staff focused on housing, employment, population health, education or food access and security in Camden, New Brunswick or Newark.

Learn more at REACH.Rutgers.edu.

NEWS Ctd.

Faculty Lead Mentoring Program

Are you an early career faculty member at Rutgers?

Join the new Peer Mentoring Network, hosted by early career faculty including IFH's Ann Nguyen, Chintan Dave and Farzin Khosrow-Khavar, for early career faculty, funded by the Office of University Equity and Inclusion.

The network aims to connect new faculty within seven years of starting to connect and support one another as early career researchers.

The first event will take place on Wednesday, October 11 4-6pm at the Rutgers Club on Livingston Campus. [Click here to register.](#)

Internship, Ctd.

Students also participated in weekly forums led by IFH faculty who discussed their research and their career journeys. Forum leaders included Darina Petrovsky, Carolyn Sartor, Yanping Jiang, Brett Millar, Ethan Halm, Michelle Chen, Joel Cantor, Dawne Mouzon, Maria Eva Dorigo, Melanie Doren, Nicole Swenarton and Joseph Brecht.

Summer interns and their mentors include:

- Atharva Bhusari mentored by Zeeshan Ahmed
- Daisy Pelaez mentored by Carolyn Sartor
- Saige Addison mentored by Ubydul Haque
- Amber Yuill mentored by Elizabeth Luth
- John Celona mentored by Michelle Chen
- Karolin Wadie mentored by Mary O'Dowd and Kathryn Corpuz
- David Prilutsky and Nathalia Gomez mentored by Ethan Halm
- Jay Xu mentored by Jim Lloyd, Stephen Crystal and Molly Nowels
- Sharvari Kolte mentored by Darina Petrovsky
- Yuyang Zhu mentored by Yanping Jiang