

IFH INSIGHTS

Quarterly News from Rutgers Institute for Health, Health Care Policy and Aging Research

Scientists Receive Pilot Grants from Rutgers Resource Center

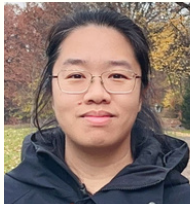
The Resource Center for Alzheimer's and Dementia Research in Asian and Pacific Americans (RCASIA) led by IFH's William Hu awarded four pilot grants to researchers to study the health of Asian older adults. Michelle Chen and Brad Kamitaki of Rutgers and Yaolin Pei and Yaguang Zheng of NYU will each receive grants of \$50,000 to support their research over a year.



Michelle Chen, PhD
Faculty member, IFH &
Assistant Professor of
Neurology, RWJMS
Primary Mentor: William Hu
Project: Longitudinal cognitive trajectories in older U.S. Chinese: dissociating racial, cultural, and environmental influences



Brad Kamitaki, MD
Assistant Professor of
Neurology, RWJMS
Primary Mentor: Joel Cantor
Project: Improving health outcomes for Asian Americans with Co-occurring epilepsy and Alzheimer's disease and related dementias



Yaolin Pei, PhD
Research Scientist, NYU Rory Meyers College of Nursing
Primary Mentor: Bei Wu
Project: A qualitative study to inform the cultural adaptation of an existing decision aid intervention for Chinese American dementia caregivers in feeding-related decision-making



Yaguang Zheng, PhD, RN
Assistant Professor, NYU Rory Meyers College of Nursing
Primary Mentor: Bei Wu
Project: Leveraging continuous glucose monitoring to reduce care burden for older Chinese Americans with Type 2 diabetes and mild AD/ADRD

Cantor Celebrates 25 Years

Congratulations to Joel Cantor on 25 years at Rutgers University! Joel is a Distinguished Professor of Public Policy at the Bloustein School of Planning and Public Policy and the founding Director of IFH's Center for State Health Policy.

Joel currently leads a major NIH-funded study examining the contribution of homelessness to racial/ethnic and geographic disparities in health services outcomes. He also is co-principal investigator of the NJHealth Study, a major new investigation of the effects of stress and resilience on population health and health equity.



JANUARY
-
MARCH
2024

IN THIS ISSUE

NEW FACULTY & STAFF

NEW GRANTS

RETREAT RECAP

AWARD WINNERS

UPCOMING EVENTS

RESOURCE CORNER

& MORE

NEWS

CAHPE Hosts Retreat

The Rutgers-NYU Center for Asian Health Promotion and Equity (CAHPE) led by IFH's Soko Setoguchi hosted its annual retreat in January at IFH.

The retreat featured a keynote address by Yuri Jang of USC, and a seminar by Daichi Shimbo of Columbia. The event also hosted focus group sessions on Asian Community and Research Engagement, as well as a yoga session.

R01 scientists Bei Wu, Mary Mittelman and Carol Byrd-Bredbenner presented on their research and three years of pilot scholars showcased their work.

CAHPE aims to serve as a regional hub for researchers to conduct studies on cardiometabolic disease and mental health issues in Asians throughout the New Jersey-New York area. Visit CAHPE.Rutgers.edu to learn about the center's call for pilot applications.



Leventhal Scholars Selected

Congratulations to Rutgers doctoral students, Naomi Cruz and Alexis Richeson, who were awarded IFH's Howard Leventhal Scholarship for Trainees. The scholarship selection committee selects two students annually to receive the funds to pursue dissertation research and jump start their investigative careers.



Cruz, an SPH doctoral student, is focusing her research on understanding the risk and protective factors for adolescent suicidality and eliminating barriers to mental health treatment.

Richeson, an RU-Camden doctoral student, is focusing her research on the relationship between gender stereotyped and religious sexual messaging and feelings towards oneself and one's relationships.



New Learning Health System on Horizon

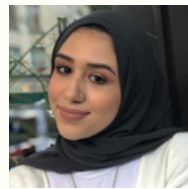
Ethan Halm, IFH core faculty member, vice chancellor for population health at Rutgers Health and deputy chief population health officer at RWJBarnabas Health, will serve as co-director of the new Learning Health System Embedded Scientist Training and Research (LHS E-STaR) Center.

Rutgers Health and RWJBarnabas Health received a \$4,237,500 grant over five years to establish the center in an effort to train future scientists and health professionals to deliver higher quality, safer and more efficient patient care through a new innovative data-driven initiative.

NEW FACES



Ashrarul Haq
Data Analyst, CHAR



Yasmeen Khellah
Research Project
Coordinator, CSHP



Dee Magnoni
Executive Director, IFH



Marc Miller
Research Assistant, NJHealth
Study



Allison Robinson
Program Assistant, CHAR



Danny Tarn
Research Assistant, NJHealth
Study



Jacob Yun
Data Analyst, CSHP

NEW GRANTS



Michal Schnaider Beeri (RARC)

Combination therapy MCI and metabolic syndrome (COMETS)

Sponsor: Alzheimers Association

Systemic and dietary advanced glycation end products in type 2 diabetes-related cognitive decline and incident dementia: effects on Alzheimer's pathology and cerebrovascular disease

Sponsor: National Institute on Aging/NIH

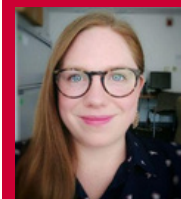
Gerald and Daphna Cramer Foundation Fund to support Alzheimer's Research of Dr. Michal Beeri



Margaret Koller (CSHP)

Communications Support to the Center for State Health Policy at Rutgers in their 25th anniversary celebration

Sponsor: Robert Wood Johnson Foundation



Jennifer Miles (CHSR)

Medication for opioid use disorder utilization among Philadelphia Recovery Home residents with opioid use disorder: A feasibility study of resident and house-level factors

Sponsor: Infrastructure for Studying Treatment & Addiction Recovery Residences/NIH

Scaling-up Medication for Opioid Use Disorder in Residential Treatment Settings

Sponsor: National Institute on Drug Abuse/NIH



Michelle Chen (CHA)

It's not where you are but how you get there: predicting neuropsychological process scores using digital voice recordings

Sponsor: Rutgers University (Busch Biomedical Grant Program; Office for Research)



Nir Eyal (CPLB)

Silicon Valley Community Foundation - Population-Level Bioethics COVID-19 Research



Ethan Halm

Learning Health System Scientist Training And Research in New Jersey (LHS STAR NJ)

Rutgers Sub-Project from Shawna Hudson
Prime Originating Sponsor: Agency for
Healthcare Research and Quality



Ann Nguyen (CSHP)

An Evidence-Based Leadership Training Intervention to Accelerate Integration of Behavioral Health and Primary Care

Sponsor: Agency for Healthcare Research and Quality



Daniel Treglia (CSHP)

Pairing Data with New Infrastructure to Improve Local Capacity to Address Homelessness in Newark

**Sponsor: Rutgers University (REACH)
Prime Originating Sponsor: Robert Wood
Johnson Foundation**



Farzin Khosrow-Khavar (PETS)

Strengthening the evidence base for the cardiovascular management of patients diagnosed with prostate cancer

Sponsor: American Heart Association

Upcoming Events

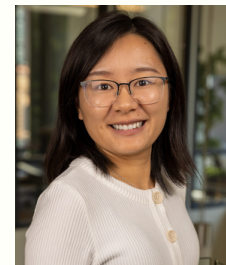
See IFH website for more details on events

- Thursday, April 4 2pm - **Brown Bag Seminar with Colleen Grogan** of University of Chicago (at IFH & Zoom)
- Tuesday, April 8 11am - BHI/RARC Seminar with **Dr. Yian Gu** of Columbia University Irving Medical Center (Zoom)
- Week of April 8 - **Memory & Aging Week** featuring Mark Gluck, S. Duke Han and William Hu (Zoom)
- Tuesday, April 16 12pm - NJ ACTS Special Populations Seminar: **Charles Neighbors** of NYU Health Evaluation and Analytics Lab (Zoom)
- Monday, April 22 11:45am - Seminar with **Professor Sir Angus Deaton** of Princeton University (at IFH & Zoom)
- Saturday, April 27 - **Rutgers Day** at Busch Campus in Piscataway and the College Avenue and Cook/Douglass campuses in New Brunswick



Jiang Honored

Yanping Jiang, core faculty member in IFH's Center for Population Behavioral Health, was selected as an Association for Psychological Science Rising Star. This designation recognizes early career researchers whose innovative work has already advanced their field of study.



Faculty Present at Symposium

IFH faculty members attended the Rutgers Diversity's Mutual Mentoring Symposium which highlighted the grant awards they received to support and sustain a diverse faculty at Rutgers. (pictured left to right below: Login George, Ann Nguyen, Brett Millar, Elizabeth Luth, Yanping Jiang)



Resource Corner

The new Rutgers logo is here! Download assets such as letterhead, PowerPoints and Zoom backgrounds from the shared Box folder. Email Nicole at nswenarton@ifh.rutgers.edu for details.

R | RUTGERS HEALTH
Institute for Health, Health Care
Policy and Aging Research

R | RUTGERS
HEALTH

R | RUTGERS

R
RUTGERS